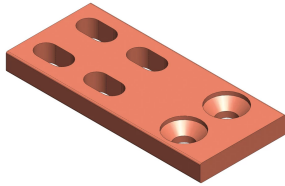


NVENT ERIFLEX FLEXBUS EXTENDER TYPE 1 FLAT AND PRE-DRILLED



CERTIFICATIONS



FEATURES

Designed to extend the Flexbus Conductors

Delivered with the appropriate countersunk head screws, nuts and washers

Designed to be mounted on any nVent ERIFLEX DPCB Punched Plain Copper Busbar

SPECIFICATIONS

Material Copper

Catalog Number	Item Name	Conductor Size	Unit Weight
FLEXEXT50A1	508110	220 mm ² , 360 mm ² , 545 mm ²	1.049 lb
FLEXEXT50B1	508113	640 mm ²	1.733 lb
FLEXEXT1001	508116	960 mm ² , 1280 mm ² , 1810 mm ²	4.012 lb

WARNING

nVent products shall be installed and used only as indicated in nVent's product instruction sheets and training materials. Instruction sheets are available at www.nvent.com and from your nVent customer service representative. Improper installation, misuse, misapplication or other failure to completely follow nVent's instructions and warnings may cause product malfunction, property damage, serious bodily injury and death and/or void your warranty.

North America

+1.800.753.9221

Option 1 – Customer Care

Option 2 – Technical Support

Europe

Netherlands:

+31 800-0200135

France:

+33 800 901 793

Europe

Germany:

800 1890272

Other Countries:

+31 13 5835404

APAC

Shanghai:

+ 86 21 2412 1618/19

Sydney:

+61 2 9751 8500



Our powerful portfolio of brands:
nVent.com CADDY ERICO HOFFMAN RAYCHEM SCHROFF
TRACER